



Melville Road, Maidstone, Kent, ME15 7UT

Guide Price £235,000 - £255,000



\*\*\* GUIDE PRICE: £235,000 - £255,000 \*\*\* A MOST SPACIOUS THREE BEDROOM TERRACED HOME OFFERING VERSATILE ACCOMMODATION LOCATED WITHIN WALKING DISTANCE OF MAIDSTONE TOWN CENTRE \*\*\*

Page & Wells are delighted to bring to the market this deceptively spacious terraced home. Appointed over three levels, the lower ground floor, with its own independent front door, features a reception room, kitchen and bathroom. The ground floor, with a further front door, offers a lounge and a third bedroom or a further reception room if preferred. The second floor consists of two bedrooms and a shower room. There is a low maintenance garden to the rear. There are no onward chain implications and an internal viewing is recommended. Contact: Page & Wells King Street on 01622 756703. Tenure: Freehold. EPC Rating: D. Council Tax Band: C.



## ACCOMMODATION

### Lower Ground Floor:

Reception Room

Bathroom

Kitchen

### Ground Floor:

Lounge

Bedroom Three/Further Reception Room

### First Floor:

Bedroom One

Bedroom Two

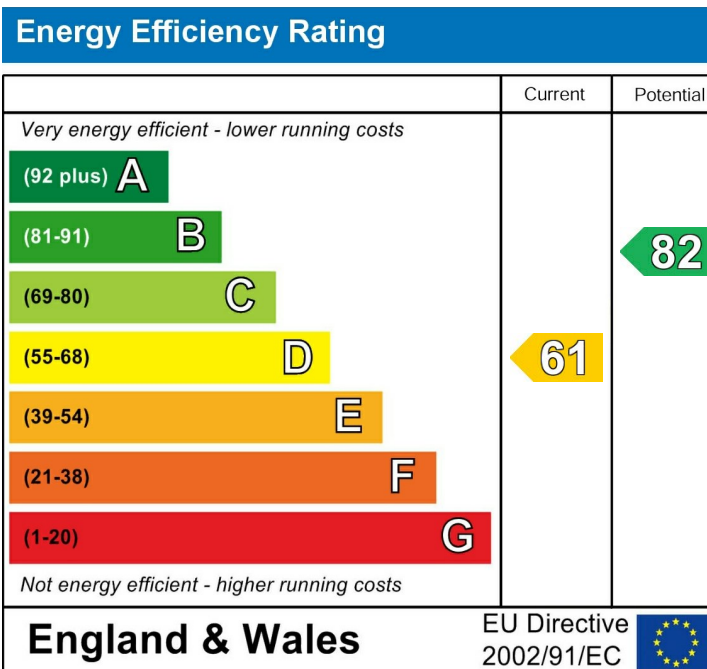
Shower Room

## EXTERNALLY

There is a low maintenance garden to the rear.

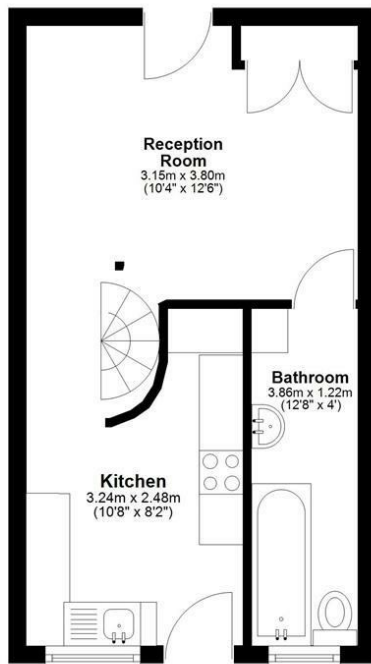
## VIEWING

Viewing strictly by arrangements with the Agent's Head  
Office: 52-54 King Street, Maidstone, Kent ME14 1DB.  
Tel: 01622 756703.

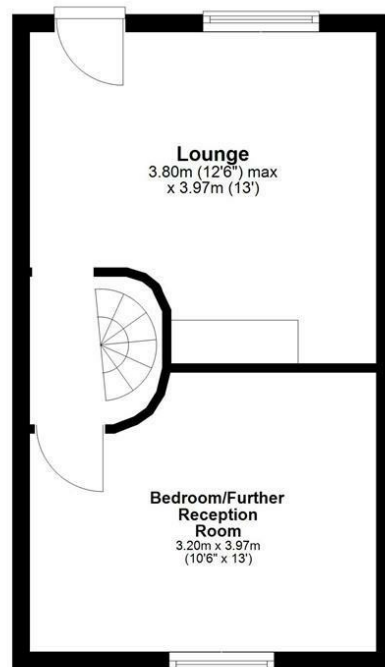




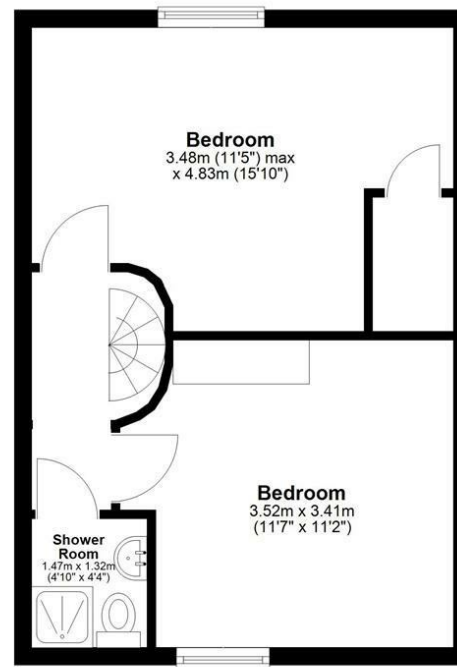
**Lower Ground Floor**



**Ground Floor**



**First Floor**



Total area: approx. 89.4 sq. metres (962.8 sq. feet)

